

The Complete Program for More Efficiency in Drive Engineering

Program Overview



Drive Engineering from a Global Player – Made by SEW-EURODRIVE

The world is constantly changing. Companies that want to play an active role in the global market today and tomorrow are constantly facing new tasks, new demands and new challenges. Mastering all of these challenges requires a clear focus on the most important tasks at hand. That is the only way to influence changes over time. Our world is one of movement. Our claim is to be a global market leader in drive engineering.



The production plants in Germany: for industrial gear unit plant and for electronic components in Bruchsal.

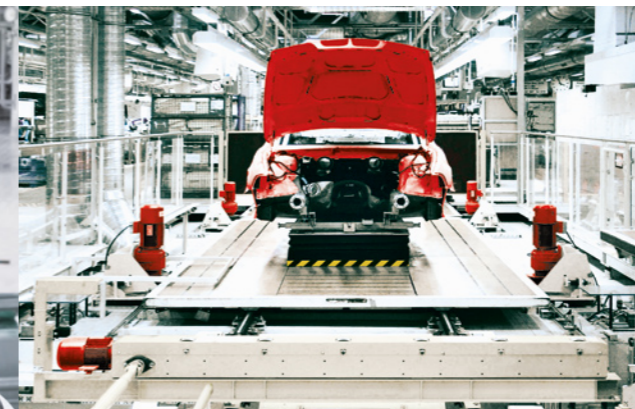
A perfect combination

Production and sales:

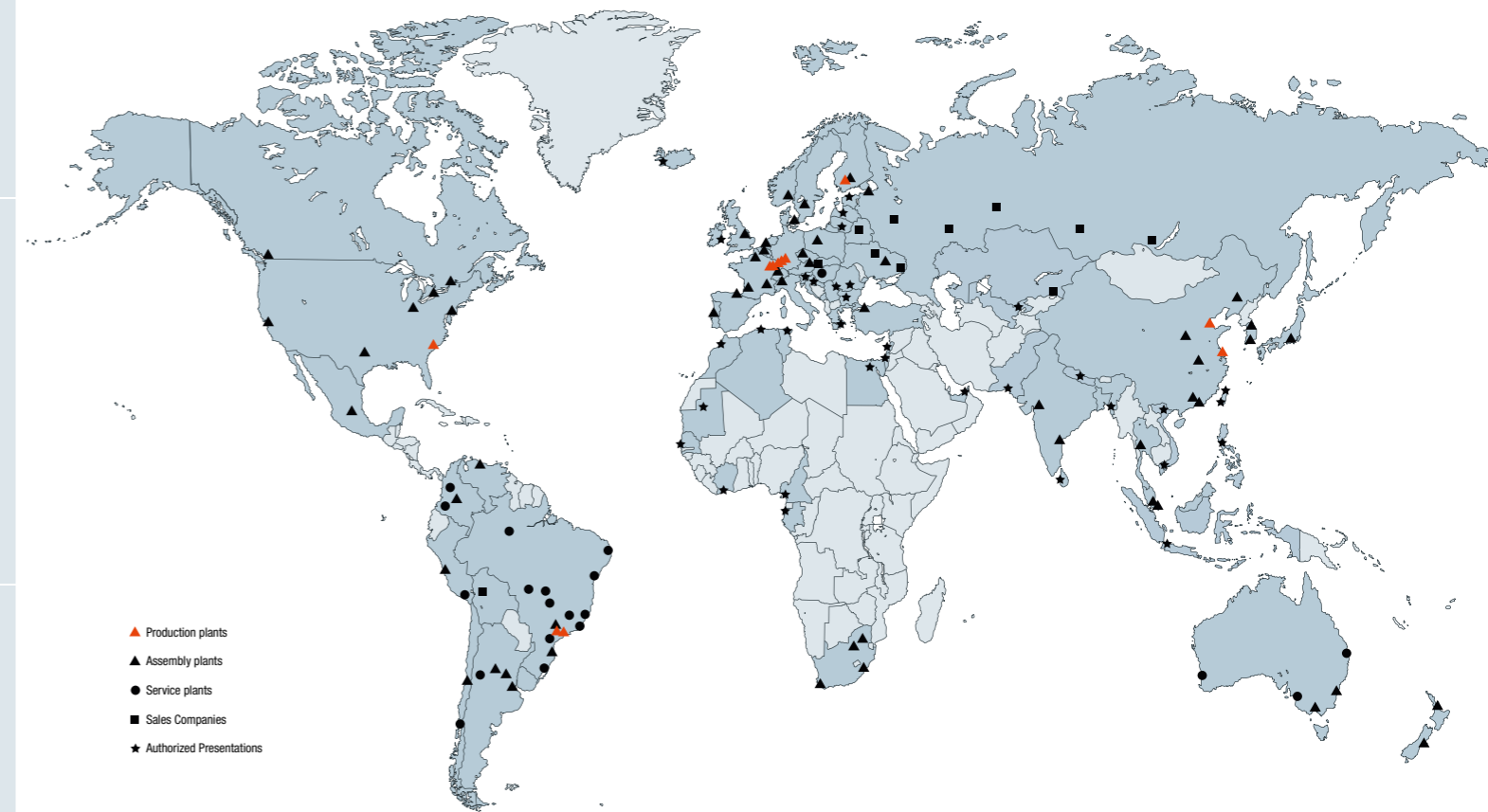
In our network of production and assembly plants, we produce all in-stock components and assemble the final product on site, according to customer demands and meeting all regional

requirements. There is only one standard in this network: The technical progress, the immediate availability of the products and the quality standards are the same – worldwide.

Driving the world – with innovative drive solutions for all branches of industry and for every application. Products and systems from SEW-EURODRIVE for any application – world-wide. SEW-EURODRIVE products can be found in a variety of industries, e. g. automotive, building materials, food and beverage as well as metal-processing. The decision to use drive technology “made by SEW-EURODRIVE” stands for safety regarding functionality and investment.



Drive systems from SEW-EURODRIVE move the world.
And make your system perform even better.



We know the demands
and offer sturdy and powerful solutions

DRS/DRE/DRP Series

- Simple configuration of all motor variants from one single series
- Saves space and costs due to compact design
- IP54, and on request: IP55 / IP65 / IP66
- Comply with worldwide standards,
- with all required labels and/or efficiency label IE1, IE2, IE3, CSA, CSAe, UR, DoE, CEL, KEL, ABNT



- Available in three energy efficient classes:
 - Type DRS: Standard Efficiency 0.37 to 200 kW
 - Type DRE: High Efficiency 0.55 to 200 kW
 - Type DRP: Premium Efficiency 0.75 to 160 kW
- Rotor Cage Design: Copper or aluminium die-cast cage
- DRS/DRE/DRP with single speed; poles: 2, 4, 6
- DRS with dual speed; poles: 4/2, 8/2, 8/4

Parallel shaft helical gear units and gearmotors F Series:

- Very slim version in parallel shaft design
- Maximum torque: 87 to 18.000 Nm
- Several sizes also available in reduced backlash version

Available designs:

- Foot- or flange-mounted
- B5 or B14 flange-mounted
- Solid or hollow shaft
- Hollow shaft with keyed connection, shrink disk, splined hollow shaft or TorqLOC®



Helical-bevel gear units and gearmotors K Series:

- Remarkably high level of efficiency
- Maximum torque: 125 to 50.000 Nm
- All sizes also available in reduced backlash version

Available designs:

- Foot- or flange-mounted
- B5 or B14 flange-mounted
- Solid or hollow shaft
- Hollow shaft with keyed connection, shrink disk, splined hollow shaft or TorqLOC®

Asynchronous servomotors DRL:

- Very robust
- 1200 1/min: 2.7 to 290 Nm
- 1700 1/min: 2.7 to 280 Nm
- 2100 1/min: 2.6 to 265 Nm
- 3000 1/min: 2.5 to 220 Nm
- With high mass moments of inertia:
 - Motor: 4.9×10^{-4} to 4330×10^{-4} kgm²
 - Brake motor: 6.2×10^{-4} to 4560×10^{-4} kgm²



Synchronous servomotors DS/CM:

- For highly dynamic applications
- 2000 1/min: 5 to 68 Nm
- 3000 1/min: 1 to 68 Nm
- 4500 1/min: 1 to 68 Nm
- 6000 1/min: 1 to 21 Nm
- With low mass moments of inertia:
 - Motor: 0.48 to 189 kgcm²
 - Brake motor: 0.83 to 204 kgcm²

Helical-worm gear units and gearmotors S Series:

- High gear ratio at the worm gear stage
- Extremely low-noise operation
- Maximum torque: 43 to 4.000 Nm

Available designs:

- Foot- or flange-mounted
- B5 or B14 flange-mounted
- Solid or hollow shaft
- Hollow shaft with keyed connection, shrink disk, splined hollow shaft or TorqLOC®



Single-stage SPIROPLAN® gearmotors W Series:

- Wear-free gearing
- Very quiet-running
- Compact design
- Lightweight aluminum housing
- Maximum torque: 12 to 180 Nm
- Available designs:
 - Foot- or flange-mounted
 - B5 or B14 flange-mounted
 - With solid or hollow shaft

Synchronous servomotors CMP Series:

- Very high dynamic properties for the entire CMP series
- Additional rotor inertia for high load moments of inertia
- Tooth winding technology
- Compact design
- Six sizes
- Four rated speeds
- Standstill torque: 0.5 to 47 Nm
- Maximum torque: 1.9 to 178.8 Nm, up to 179 Nm with the CMP100L

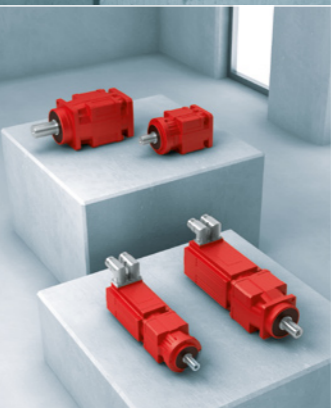


CMS Series Electric Cylinder :

- Various spindle pitches for linear velocities (up to 0.5 m/s)
- Stroke lengths up to 600 mm
- HIPERFACE® encoder or resolver
- Optional 24 V brake
- Oil bath lubrication for CMS63S/M
- Maximum force 5.3 kN
- Peak torque: 5.2 to 11.1 Nm
- Recirculating ball screw p = 5 mm incline
- Positioning precision 5/100 mm at constante force and temperature

Aseptic Motor:

- For use in hygienic areas
- Smooth surfaces: no dirt build up
- Humidity protection
- Three motor sizes DAS80, DAS90 and DAS100
- Motor corrosion protection: KS internal treatment
- OS2 to OS4 surface protection
- Motor protection thermistor in thermal class F, TH thermostat relay as option
- IS plug connector



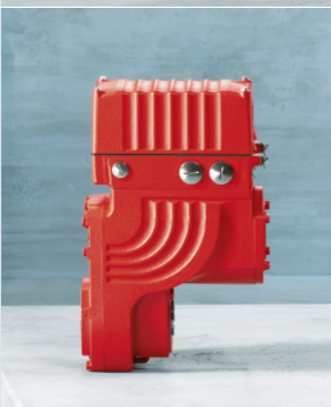
PS.C Series

Planetary Servo Gear Units with Solid Shaft:

- Low backlash planetary servo gear
- Torque classes: 30 to 305 Nm
- For versatile, dynamic, and above all cost optimized drive solutions
- Available designs:
 - PSC: B5 output, solid shaft
 - PSKC: B5 output, solid shaft with key
 - PSCZ: B14 output, solid shaft
 - PSKCZ: B14 output, solid shaft with key

MOVIGEAR® – The mechatronic drive system:

- Compact design
- Up to 50% reduced energy costs
- MOVIGEAR® control systems:
 - SNI principle (Single Line Network Installation)
 - SEW System Bus (CAN based protocol)
 - Binary controlled
 - AS-Interface controlled
- MOVIGEAR® sizes: MGF.2 up to 200 Nm, MGF.4 up to 400 Nm
- MOVIGEAR® variants: with hollow shaft and key or with TorqLOC® hollow shaft mounting system



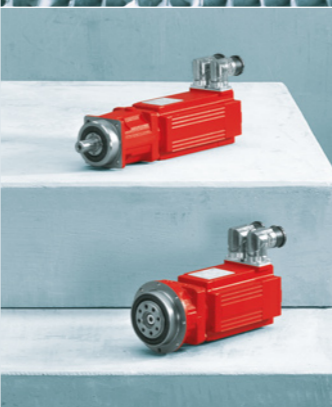
MOVIFIT® decentralized drive controller:

- Modular structure
- Available in three unit variants with a voltage range 3 x 380 – 500 V
- MOVIFIT® MC: Up to three MOVIMOT® to be connected via hybrid cable
- MOVIFIT® SC: Electronic (contactless) motor starter
- MOVIFIT® FC: Configurable (open-loop) frequency inverter

PS.F Series

Planetary Servo Gear Units with Flange Block Shaft:

- Low backlash planetary servo gear
- Torque classes: 25 to 3000 Nm
- Three output variants are available:
 - PSF: B5 output, solid shaft
 - PSKF: B5 output, solid shaft with key
 - PSBF: B5 output, flange block shaft according to EN ISO 9409



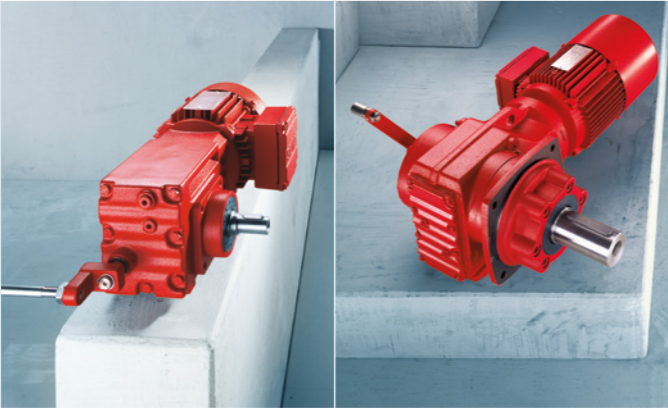
BS.F series

Helical-bevel servo gear units:

- Low backlash planetary servo gear
- Torque classes: 40 to 1500 Nm
- Five output variants are available:
 - BSF: Solid shaft
 - BSKF: Solid shaft with key
 - BSBF: Flange block shaft (EN ISO 9409)
 - BSHF: Hollow shaft with shrink disk
 - BSAF: Hollow shaft with keyway (shaft mounted gear unit)

Gearmotors for overhead trolley systems – light-duty operation HW30 and HS40:

- Drives to C1 guideline:
low-maintenance, low-noise, smooth-running and compact
- Torque: 70 to 130 Nm



Gearmotors for overhead trolley systems – heavy-duty operation HS41, HS50, HS60, HK30, HK40, HK50, HK60:

- Loadable and safe to operate
- Torque: 185 to 820 Nm
- Can be used for wheel loads up to 40.000 N
- Reduced power consumption

MOVITRAC® B frequency inverter:

- Smaller dimensions and unit modularity
- Supports all commercial fieldbus systems
- Extensive expansion options
- Straight forward, user friendly parameter setting process
- 1-phase and 3-phase mains connection for AC 200 – 240 V
- 3-phase mains connection for AC 380 – 500 V
- 230 V / 1-phase: 0.25 to 2.2 kW
- 230 V / 3-phase: 0.25 to 30 kW
- 400/500 V / 3-phase: 0.25 to 75 kW

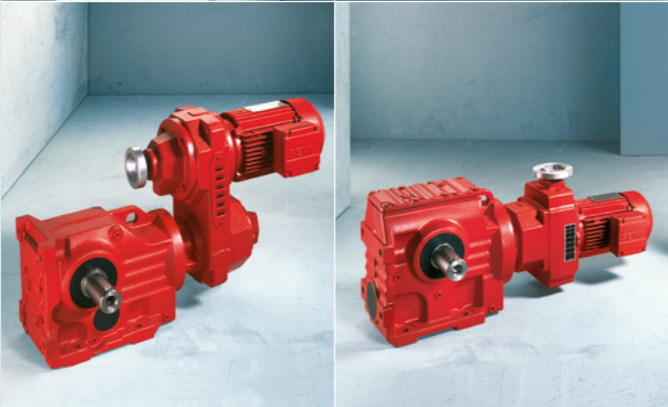


MOVIDRIVE® B drive inverter:

- High-performance inverter for dynamic drives
- Modular concept
- Broad power range
- 3-phase mains connection for AC 230 V and AC 400 to 500 V
- 200/240 V / 3-phase: 1.5 to 37 kW
- 400/500 V / 3-phase: 0.55 to 315 kW

VARIBLOC® wide V-belt variable speed gearmotors:

- Up to 45 kW
- Speed setting ranges: 1:4, 1:6 and 1:8
- U or Z shaped power flux



VARIMOT® friction disc variable speed gearmotors:

- Up to 1.1 kW
- Speed setting ranges: 1:4 or 1:5

MOVITRAC® LTP:

- Cost effective and affordable
- Small physical size
- Simple mechanical and electrical installation

Powerful features:

- 150% overload for 60 secs (175% for 2 secs)
- Analogue output
- Voltage: 220 to 600 V

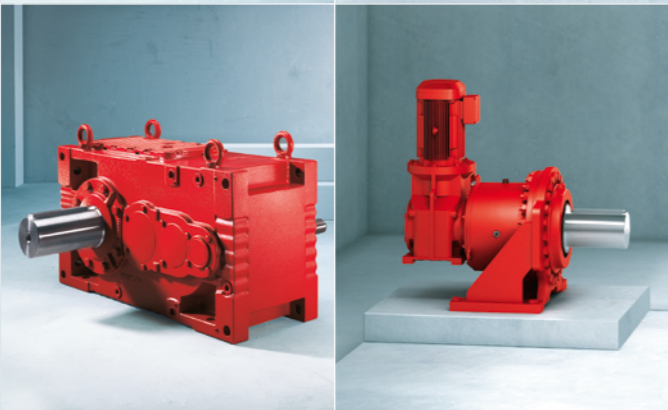


MOVITRAC® LTE-B:

- Optimal combination of price, performance and range of applications
- Available in three sizes
- Standard design in degree of protection IP20
- Also available in IP55 / NEMA 12k
- Power range:
115 V / 1-phase: 0.37 to 1.1 kW
230 V / 1-phase: 0.37 to 2.2 kW
230 V / 3-phase: 0.37 to 4.0 kW
400 V / 3-phase: 0.75 to 7.5 kW (IP20 up to 11 kW available)

Industrial gear units MC Series:

- Compact helical and helical-bevel helical gear units
- Eight sizes
- Maximum torque: 6 to 65 kNm
- Local assembly
- EBD (extended bearing distance) combined with drywell
- Forced lubrication
- Local stock holding



Industrial gear units P Series:

- Planetary gear units
- Maximum torque: 24 to 360 kNm
- Various L.S connections
- Helical and bevel helical input

MOVIMOT® gearmotor:

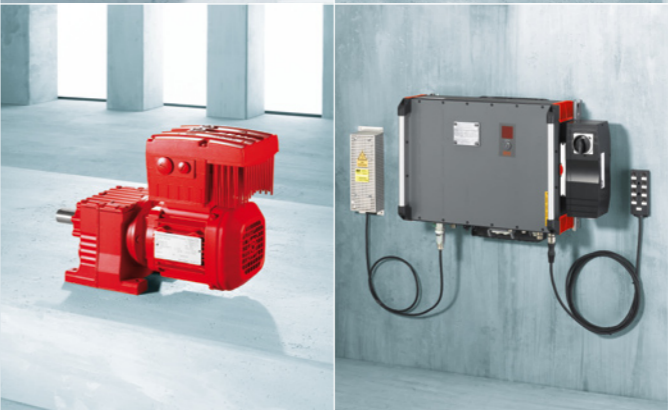
- Gearmotor with integrated frequency inverter

Connection voltage:

- 3 x 380 to 500 V ± 10% / 50/60 Hz
- 3 x 200 to 240 V ± 10% / 50/60 Hz

Maximum torque: 2.52 to 12.4 Nm

- Power range: 0.37 to 4.0 kW
- Enclosure: IP54, optional IP55, IP65 or IP66



MOVIPRO® SDC/ADC:

- Power range: 2.2 to 15 kW

MOVIPRO® SDC:

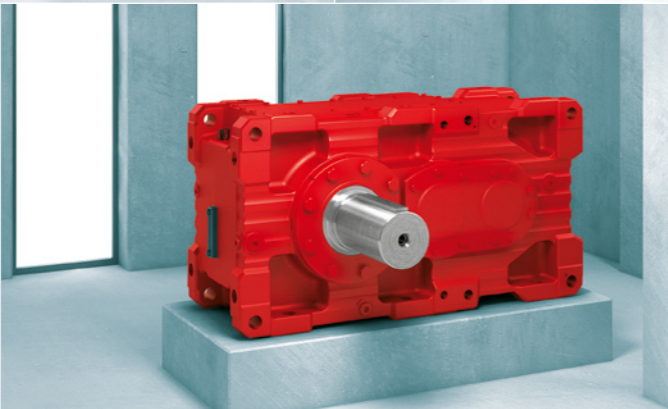
- Standardized application modules
- Easy and convenient implementation of speed and position control

MOVIPRO® ADC:

- Free programmability according to IEC 61131-3 and PLCopen
- Flexible implementation of system-specific or complex functions

X Series

- Robust gear housing
- Reduced cost and weight due to high power density and finely stepped sizes
- Effective cooling systems
- Two mounting positions with single version



- Shorter delivery times for standard versions and spare parts
- Maximum torque: 58 to 475 kNm
- Local assembly
- Local stock holding

Drive Operator Panels (DOP):

- For visualization and diagnostics
- Eight types:
DOP11B-10
DOP11B-15
DOP11B-20
DOP11B-25
DOP11B-30
DOP11B-40
DOP11B-50
DOP11B-60
- Mobile operator panel DOP M70



Further components for drive systems for decentralized installation:

- Fieldbus interfaces MF../MQ.. for PROFIBUS, PROFIsafe, INTERBUS,CANopen, and DeviceNet
- Field distributors
- Hybrid cables

How we're driving the world



SEW-EURODRIVE
Driving the world

SEW-EURODRIVE is right there for you:

Argentina

Phone +54 3327 4572-84
Fax +54 3327 4572-21
sewar@sew-eurodrive.com.ar

Australia

Phone +61 3 9933-1000
Fax +61 3 9933-1003
enquires@sew-eurodrive.com.au

Austria

Phone +43 1 617 55 00-0
Fax +43 1 617 55 00-30
sew@sew-eurodrive.at

Belarus

Phone +375 17 298 38 50
Fax +375 17 298 1898
sales@sew.by

Belgium

Phone +32 16 386-311
Fax +32 16 386-336
info@sew-eurodrive.be

Brazil

Phone +55 11 2489-9133
Fax +55 11 2480-3328
sew@sew.com.br

Canada

Phone +1 905 791-1553
Fax +1 905 791-2999
marketing@sew-eurodrive.ca

Chile

Phone +56 2 75770-00
Fax +56 2 75770-01
ventas@sew-eurodrive.cl

China

Phone +86 22 25322612
Fax +86 22 25323273
info@sew-eurodrive.cn

Colombia

Phone +57 1 54750-50
Fax +57 1 54750-44
sewcol@sew-eurodrive.com.co

Czech Republic

Phone +420 255709601
Fax +420 220121237
sew@sew-eurodrive.cz

Denmark

Phone +45 43 9585-00
Fax +45 43 9585-09
sew@sew-eurodrive.dk

Finland

Phone +358 201 589-300
Fax +358 3 7806-211
sew@sew.fi

France

Phone +33 3 88 73 67 00
Fax +33 3 88 73 66 00
sew@usocome.com

Great Britain

Phone +44 1924 893-855
Fax +44 1924 893-702
info@sew-eurodrive.co.uk

Hong Kong

Phone +852 36902200
Fax +852 36902211
contact@sew-eurodrive.hk

Hungary

Phone +36 1 437 06-58
Fax +36 1 437 06-50
office@sew-eurodrive.hu

India

Phone +91 265 2831086
Fax +91 265 2831087
mdoffice@seweurodriveindia.com

Italy

Phone +39 02 96 9801
Fax +39 02 96 799781
sewit@sew-eurodrive.it

Japan

Phone +81 538 373811
Fax +81 538 373814
sewjapan@sew-eurodrive.co.jp

Kazakhstan

Phone +7 727 334 1880
Fax +7 727 334 1881
sew@sew-eurodrive.kz

Malaysia

Phone +60 7 3549409
Fax +60 7 3541404
sales@sew-eurodrive.com.my

Mexico

Phone +52 442 1030-300
Fax +52 442 1030-301
scmexico@seweurodrive.com.mx

Netherlands

Phone +31 10 4463-700
Fax +31 10 4155-552
info@vector.nu

New Zealand

Phone +64 9 2745627
Fax +64 9 2740165
sales@sew-eurodrive.co.nz

Norway

Phone +47 69 241-020
Fax +47 69 241-040
sew@sew-eurodrive.no

Peru

Phone +51 1 3495280
Fax +51 1 3493002
sewperu@sew-eurodrive.com.pe

Poland

Phone +48 42 6765300
Fax +48 42 6765345
sew@sew-eurodrive.pl

Portugal

Phone +351 231 20 9670
Fax +351 231 20 3685
info@sew@sew-eurodrive.pt

Russia

Phone +7 812 3332522
Fax +7 812 3332523
sew@sew-eurodrive.ru

Singapore

Phone +65 68621701
Fax +65 68612827
sewsingapore@sew-eurodrive.com

Slovakia

Phone +421 2 33595202
Fax +421 2 33595200
sew@sew-eurodrive.sk

South Africa

Phone +27 11 248-7000
Fax +27 11 494-3104
info@sew.co.za

South Korea

Phone +82 31 492-8051
Fax +82 31 492-8056
master.korea@sew-eurodrive.com

Spain

Phone +34 94 4318470
Fax +34 94 4318471
sew.spain@sew-eurodrive.es

Sweden

Phone +46 36 344200
Fax +46 36 344280
info@sew-eurodrive.se

Switzerland

Phone +41 61 41717-17
Fax +41 61 41717-00
info@imhof-sew.ch

Thailand

Phone +66 38 454281
Fax +66 38 454288
sewthailand@sew-eurodrive.com

Turkey

Phone +90 216 4419163
Fax +90 216 3055867
sew@sew-eurodrive.com.tr

Ukraine

Phone +380 56 370 3211
Fax +380 56 372 2078
sew@sew-eurodrive.ua

Uruguay

Phone +598 2 21181-89 +90
Fax +598 2 21181-89 +90
sewuy@sew-eurodrive.com.uy

USA

Phone +1 864 439-7537
Fax +1 864 439-7830
cslyman@seweurodrive.com

Venezuela

Phone +58 241 832-9804
Fax +58 241 838-6275
ventas@sew-eurodrive.com.ve

**SEW
EURODRIVE**

SEW-EURODRIVE (PTY) LTD
Eurodrive House
Cnr. Adcock Ingram and
Aerodrome Road
Aeroton
Johannesburg 2013
P.O.Box 90004
Bertsham 2013
Phone 0 11 248-7000
Fax 0 11 494-3104

→ www.sew-eurodrive.com
→ www.sew.co.za