

PLANT & EQUIPMENT RENTAL



**John
thompson**

ACTOM

John Thompson, Utility Boiler and Environmental (B&E)

Equipment Rental

John Thompson, Utility Boiler and Environmental (B&E), has through the execution of various projects invested in the procurement of numerous equipment.

Some equipment is actively being utilised within current projects, while the remainder of the equipment have been moved to our new facility in Lincoln road Benoni South.

This facility is now the home of our brand new tools and equipment rental business. We are proud to present the items contained in this brochure to you at extremely affordable rates. We look forward to doing business with you very soon.

Note: Any tools & equipment that is not listed can be sourced upon request.

CONTENTS

PAGE NO

Tower Crane	04
Mobile Crane	06
6t Telehandler	09
16t Telehandler	10
Forklifts, Tractors & Trailers	11
20m Cherry Picker	12
15m Cherry Picker	13
Truck & Trailers	14
Tools & Equipment	15
Lifting Equipment	17
Storage & Office Containers	20
Scaffolding	21
John Thompson Business Units	23
Contact Details	24

	Specification PDF		3 in 1 Crane/forklift truck/safety cage		Working at height training
	Extensive monitor display		Self leveling		Auxiliary power
	Smooth transmission		Gradeability		Horn
	Best drive/lifting performance		Four-wheel drive		Cage width
	4 Steering modes		Heating/AC as standard		Cage depth
	2 Winches		Lifting/tiedown lugs		Cage rotation
	Ultimate boom design		Hydraulic system		Fly boom arc
	Cup holder		All motion alarm		

LINDEN COMANSA TOWER CRANE

21 LC660 24 TON CAPACITY

About the Crane

The 21 LC660 is a high-capacity load crane. It is highly efficient for any type of construction, particularly mining, infrastructure, industry and civil engineering works.

Linden Comansa developed the Flat-Top modular system cranes by removing the cat-head and the pendant-lines, offering considerable advantages that make their models a very interesting alternative for a large number of users.

This system offers the following advantages amongst others:

- Quick, easy and safe installation of light parts and of larger pre-assembled units.
- The complication of installing pendant-lines is eliminated.
- The jib sections are easily assembled using the same system as the LINDEN 8000: pin on the top strut and screws on the bottom strut.

The application of the Flat-Top modular system for the design of the LC2100 series makes many of their tower and jib elements compatible and interchangeable between the cranes in the series, and even with other models of different series.

Transport by panels considerably reduces the size of the package, and therefore the cost, which is a noteworthy advantage in long-distance freight operations. In fact, all the components of the 21 LC660 fit in HQ containers, apart from some jib sections which would be transported in an Open-Top container.

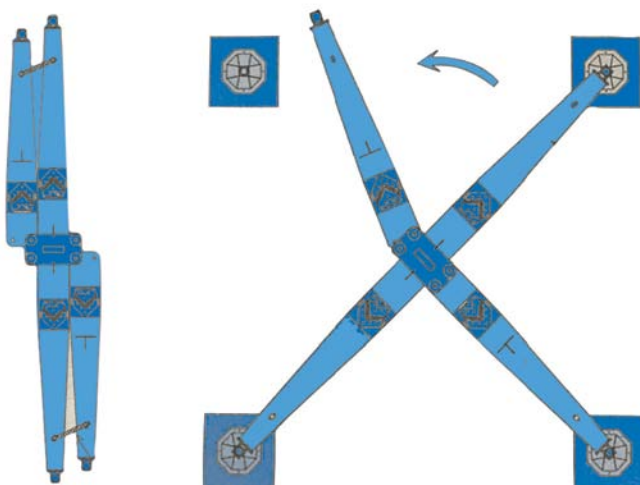
Cross Shaped Base

The 21 LC660 has a folding cross shaped base with a footprint of 8m x 8m, which can be transported as a single item. For assembly, the base is unfolded and levelled using guide screws in a straightforward manner.



Hydraulic Jacking System

The 21 LC660 can be erected to a relatively low height (15m - 30m depending on site requirements) using a 90t mobile crane. At the chosen height the crane can be made fully operational. Once this is achieved, the 21 LC660 can be erected to the final height without the use of a mobile crane by using the hydraulic jacking frame. This feature dramatically reduces the erection cost.



Cross shaped base





Powerlift System

The 21 LC660 includes **PowerLift**, a momentum control and limiting method which **improves the load diagram by 10%** at reduced speeds.

With PowerLift, the crane can move the nominal load shown in the diagram over greater distances.

- With a single trolley, working with single reeving, the capacity of the crane increases towards the end of the boom, with faster working speeds.

- The two trolleys and double reeving ensure maximum load capacity.

allowing completely independent movements of the single reeving trolley.


The crane's main lifting, trolley and slewing manoeuvres have frequency variation, allowing the loads to be distributed precisely and smoothly.

Mechanisms


The 21 LC660 is equipped with the Linden Comansa double trolley system, which improves their load diagram in two ways:

The switch from double to single reeving or vice-versa is automatic. When working with single reeving, the rear trolley is stored in receptor at the base of the jib,

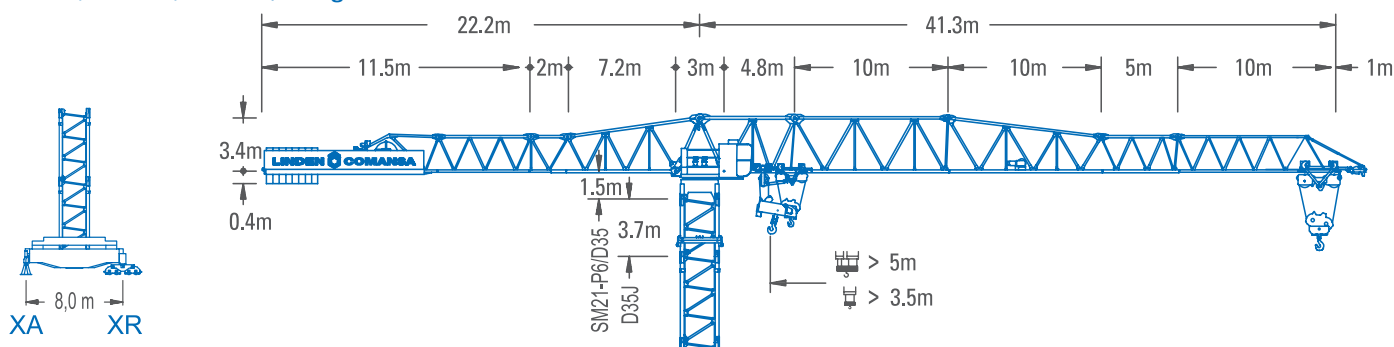
Load Chart

R (m)							
40	28.5	30	32	35	39.2	m	
	24000	22580	20880	18720	16300	kg	

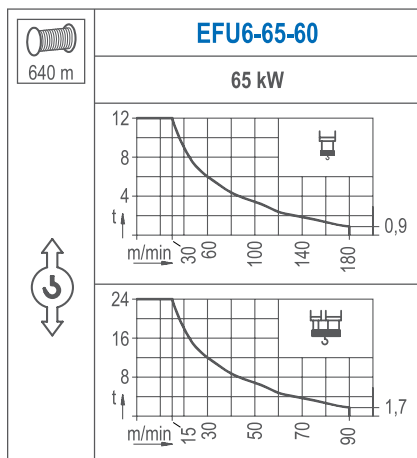
Load Chart POWERLIFT

R (m)							
40		30.8	32	35	39.2	m	
		24000	22900	20550	17930	kg	

Reach (Radius) = 40m, Height Under Hook = 69m




Hoisting




Power

HOIST	TROLLEY	SLEWING	TRAVEL	VOLTAGE	GENERATOR
EFU6-65-60	CFU-13	(4X) GFU-7.5	(4X) TRA-7.5	400V	205kVA


Slewing

	GFU-7.5
	4x 7,5 kW
0 → 0,7 rpm	

Trolley

	CFU-13
	13 kW
0 → 75 m/min	

Travelling

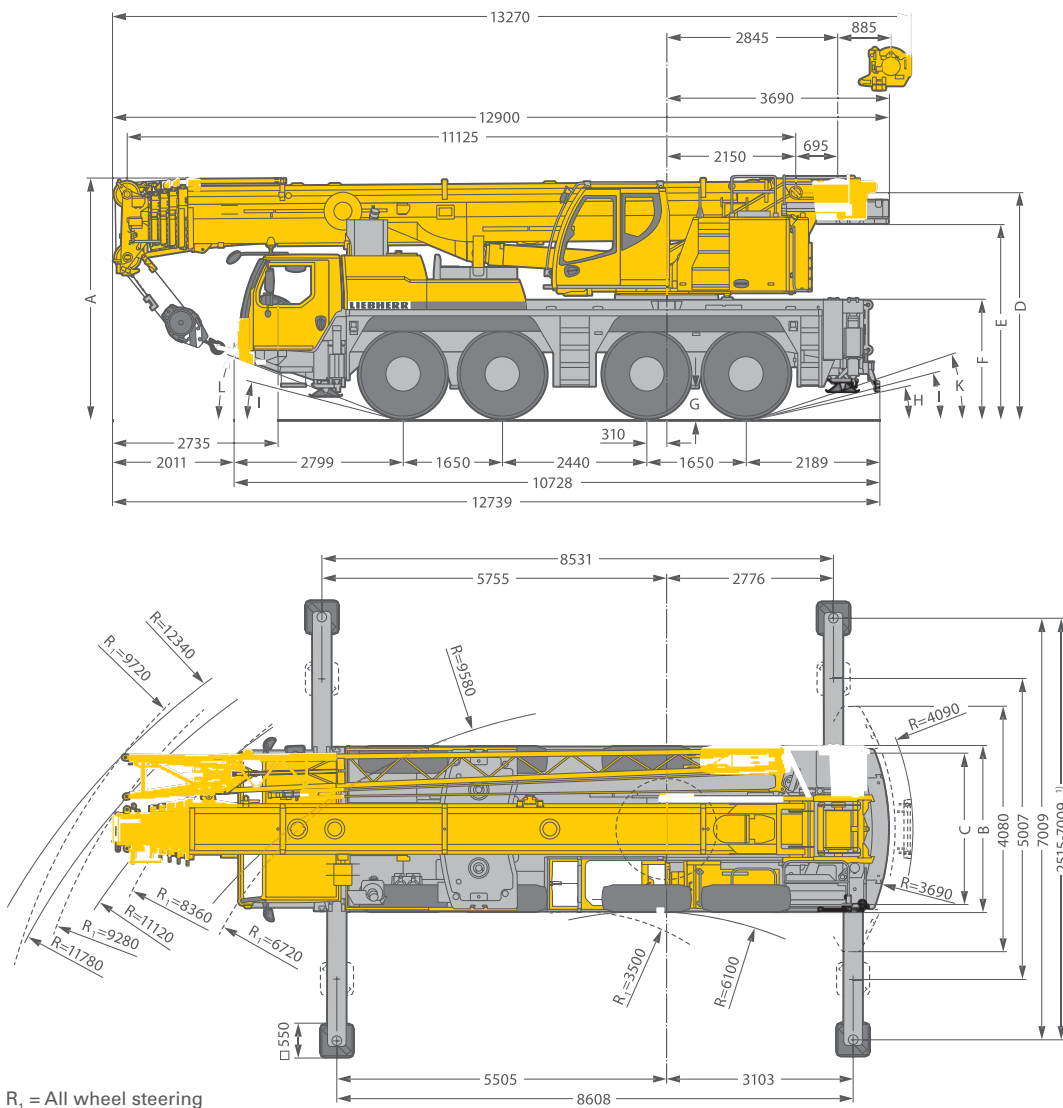
	TRA-7.5
	4x 75 Nm
0 → 20 m/min	
7XR6A3	10XR83

LIEBHERR MOBILE CRANE WITH FLY JIB

LTM 1090-4.1 90 TON CAPACITY



Dimensions:



R_1 = All wheel steering

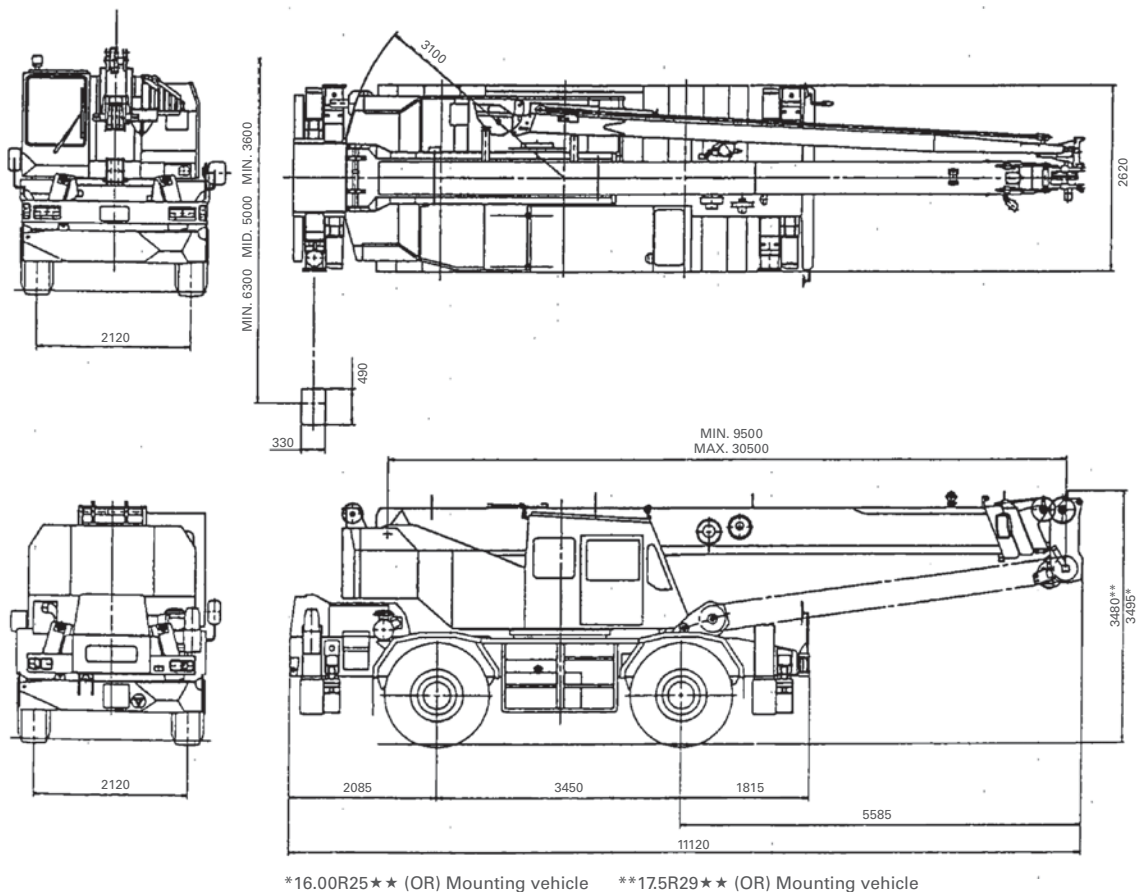
	A	A 100 mm*	B	C	D	E	F	G	H	I	K	L
385/95 R 25 (14.00 R 25)	3950	3850	2750	2360	3665	3150	1890	378	10°	11°	16°	17°
445/95 R 25 (16.00 R 25)	4000	3900	2750	2300	3715	3200	1940	428	11°	13°	17°	18°
525/80 R 25 (20.5 R 25)	4000	3900	2890	2370	3715	3200	1940	428	11°	13°	17°	18°

* Lowered

TADANO ROUGH TERRAIN HYDRAULIC CRANE

TR-250M-5-00104 25 TON CAPACITY

Dimensions:



Technical Specifications

• Max. traveling speed:	49 km/h
• Overall length:	11,120mm
• Overall width:	2,620mm
• Overall height:	3,495mm
• Steering:	Full hydraulic power steering
• Drive:	2-wheel and 4-wheel drive selection
• Max lifting height:	Boom 28m Jib 35m

TADANO MOBILE CRANE

GR-550XL 50 METRIC TON CAPACITY

Key Features:

Fuel Monitoring SystemSmDS. The Fuel Monitoring System, displayed on the AML-C screen, monitors fuel consumption rates during crane operations, idling, and while traveling, allowing the operator to optimise fuel efficiency, reduce CO2 emissions and noise level.

New Carrier Frame

The new carrier frame design was developed and build so that its lightweight is compatible with its high rigidity to achieve and advance level of performance.

As a result, the rigidity was enhanced by as much as 35% which enable highly stabilised maneuverability for the new model of crane Two telescoping modes 1&2 The operator has enhanced capabilities with two boom telescoping options whichever suits the lift needs.

Mode 1 - Is an extension of 2nd section only. Then follows the synchronized extension of 3rd, 4th and 5th sections.

Mode 2 - Is a synchronized extension of 3rd, 4th and 5th sections Then 2nd section extends independently.

Eco Mode System - Reduces fuel consumption by approximately 40% while the crane is being operated.

Positive Control System - Reduces fuel consumption by approximately 60% when the crane is in a state of idling.



Mode 1



Mode 2

Technical Specifications

• Max. traveling speed:	50 km/h
• Overall length:	approx. 13,055mm
• Overall width:	approx. 2,980mm
• Overall height:	approx. 3,765mm
• Min. turning radius:	(at centre of extreme outer tire)
• 2 - wheel steering:	11.9m
• 4 - wheel steering:	6.8m



MAGNI TELESCOPIC HANDLER

RTH 6.26SH 6 METRIC TON CAPACITY

Description

The RTH 6.26SH is a tough, high-performance rotating telescopic handler. It can lift loads up to 26m, and is equipped with scissor stabilisers to ensure greater safety and stability during working maneuvers. It is compatible with a huge range of accessories, thanks also to the RFID system which provides automatic recognition of the attachment and creation of the relative load charts; this telescopic handler is able to meet a wide range of applications in construction and industry.

Standards Met

CE CERTIFICATION

EN 1459-2: Concerning standards for slewing variable-reach trucks

EN 280: Concerning standards for mobile elevating work platforms

EN 13000: Concerning standards for hydraulic cranes

FOPS/RaPS

Regulation (EU) 2016/1628: Concerning engine emissions standards

Technical Specifications

• Stabilisers:	Scissors
• Lifting capacity:	6,000 kg
• Capacity at maximum height:	3,200kg
• Lifting height:	25.70m
• Reach:	22m
• Engine:	Mercedes OM 935 LA Stage IV
• Rated power:	129W - 175 hp
• Number of gears:	2/2
• Hydraulic system:	Load Sensing 350bar
• Length:	7.82m
• Width:	2.54m
• Ground clearance:	323mm
• Unladen weight:	20,050kg
• Travel speed:	41 km/h
• Climate control as standard:	Yes
• Automatic attachment recognition:	Yes
• Rotation:	360°



Attachments



Rotating safety basket
500 kg 2- 4.5m



Telescopic JIB
2200 -1400kg



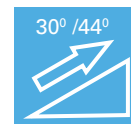
Hook 6 Ton



Forks 6 Ton 1.2m



Winch 6 Ton



MAGNI TELESCOPIC HANDLER

HTH 6.10 16 METRIC TON CAPACITY

Description

The HTH telescopic handler is ideal for moving large, bulky loads in complete safety. Able to Lift up to 16ton, it is compatible with a wide range of accessories, making it extremely versatile. Equipped with an RFID System which provides automatic recognition of the various attachments used, this telescopic handler is able to meet a wide range of applications in heavy industry. Its four-wheel drive system, three maneuvering modes and high ground clearance makes it highly maneuverable on all terrains. Its engine and hydrostatic transmission offer power and precision when approaching loads.

Standards Met

CE CERTIFICATION

EN 1459-2: Concerning standards for slewing variable-reach trucks

EN 13000: Concerning standards for hydraulic cranes

FOPS/ROPS

Regulation (EU) 2016/1628: Concerning engine emissions standards

Technical Specifications

• Lifting capacity:	16,000 kg
• Capacity at maximum height:	9,000kg
• Lifting height:	9.50m
• Reach:	5.10m
• Engine:	Mercedes OM 934 LA Stage IV
• Rated power:	12kw - 175 cv
• Number of gears:	2/2
• Hydraulic system:	Load Sensing 350bar
• Length:	6.38m
• Width:	2.57m
• Ground clearance:	440mm
• Unladen weight:	20,500kg
• Travel speed:	25km/h
• Climate control as standard:	SI
• Automatic attachment recognition:	SI
• Rotation:	360°



Attachments



Rotating safety basket
500 kg 2- 4.5m



Fork 16 Ton carriage
with positioner and side
shift 3m



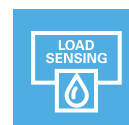
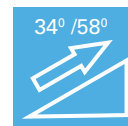
Hook 16 Ton



Forks 15 Ton 2m



Winch 16 Ton



FORKLIFTS,TRACTORS & TRAILERS



Clark 7 Ton Forklift



Nissan 3 Ton Forklift



TCM 10 Ton Forklift



Toyota 3 Ton Forklift



1000L Diesel Bower



Case JX95 - 69kW



New Holland TS120 - 90kW



New Holland T6020 - 82kW



Farm Style Trailers

- 3T x 4.5m Long
- 8Tx 9m Long
- 15T x 9m Long
- 18.5T x 6m Long

JLG CHERRY PICKER

600AJ ARTICULATING BOOM LIFT

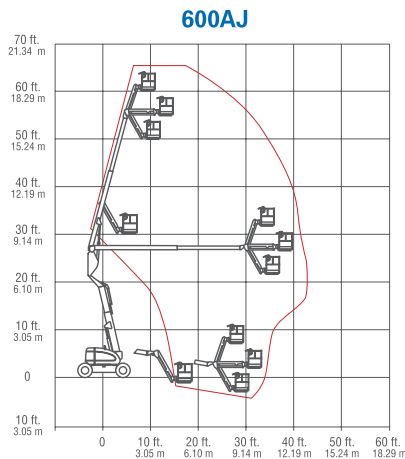
Description

If you need a diesel-operated cherry picker that has nearly unmatched manoeuvrability and can easily get to hard to access spaces, you should consider hiring the JLG 600AJ Cherry Picker. The 600AJ is fitted with a tier 4 diesel engine, which gives it unparalleled fuel efficiency, allowing you to save on the running cost of your construction project. It's powerful diesel engine and four wheel drive capabilities also allow you to tackle job sites that don't have easy accessibility options with safety and confidence. These features make the 600AJ a great choice for the following construction and maintenance projects:

- General construction and building maintenance
- Projects that require up and over clearance
- If you have projects that require steel erection.

Features

- Oscillating Axle
- 180 Degree Hydraulic Platform Rotator
- 5 Degree Tilt Alarm/Indicator light
- Swing-Out Engine tray
- Hour-meter
- Proportional Controls
- Fall arrest Platform.
- Rear Entry 0.91 m x 2.44m



Technical Specifications

- | | |
|---------------------|---------------|
| • Working height: | 2.5m - 20.29m |
| • Maximum height: | 20.29m |
| • Width: | 2.44m |
| • Length Stowed: | 8.82m |
| • Height Stowed: | 2.56m |
| • Lift Capacity: | 227kg |
| • Power source: | Diesel |
| • Weight: | 10,455kg |
| • Length: | 6.38m |
| • Drive speed 4WD: | 6.8km/h |
| • Gradeability 4WD: | 45% |



NIFTY CHERRY PICKER

HR15 ARTICULATING BOOM LIFT

Description

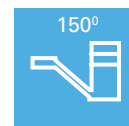
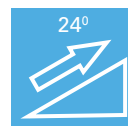
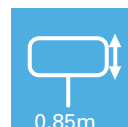
This HR 15 4x4's 1.8m wide Tough Cage offers more space for materials and tools and a 150° fly-boom with 180° cage rotation increases accuracy when positioning the cage. The HR15 is Diesel operated and incorporates a versatile and efficient Tier 4/Euro Stage IIIB compliant engine to deliver maximum traction and gradeability, making it ideal for rough or uneven ground. Its compact base allows it to maneuver easily in enclosed spaces and its extremely low overall weight helps to minimise transportation costs.

Features

- GVW From only 4,500kg, lowest weight in its class
- Tough-cage with SiOPS as Standard, a multi-award winning operator protection
- Superb Maneuverability, 3.70m outside turning radius
- Proportional Multi-Function Control, giving a fast & precise operation

Technical Specifications

• Working height:	2.5m - 15.7m
• Height Stowed:	6.35m
• Power source:	Diesel
• Gradeability 4WD:	24%
• Maximum height:	15.7m
• Width:	2m
• Length:	6.38m
• Height Stowed:	2.1 m
• Lift Capacity:	225kg
• Drive speed 4WD:	6km/h



MAN TRUCKS & TRAILERS

Description

The MAN TGS is unparalleled in its versatility: whether in difficult short-haul or distribution transport, on the construction site, in the utilities sector or as a specialist on a tough mission, our robust all-rounder is guaranteed to impress no matter what the task.

We have two, high quality well maintained trailers to rent, to assist with any/all your transport needs. Either a 40t Lowbed or a 33t Drop-side trailer at your service to transport your site vehicles or containers to and from your destination.



Lowbed Trailer Technical Specifications

• Stabilisers on Ramp:	Chain & Spring
• Capacity:	40,000 kg
• Length exl insert:	8,1 00mm
• Length of insert:	3,460mm
• Width excl extensions:	2,41 0mm
• Width incl extensions:	3,030mm
• Ground clearance:	600mm
• Rotation of Ramp:	180°

Dropside Trailer Technical Specifications

• Capacity:	33,000 kg
• Length:	14,000mm
• Width inside:	2,500mm
• Ground clearance:	1,300mm
• Removable Dropsides:	on request
• Ground Top height:	2,550mm
• Dropside Width:	1,160mm



Hook points



Extending side supports



TOOLS & EQUIPMENT

Welding Machines

Jasic MIG 350

(Our most popular machine)

- Gas/Gasless Mig
- MMA (Electrode Welding)
- DC+/DC- Function
- Variable inductance & burn back control
- Stepless voltage control
- Trolley with pull out storage
- Scratch start DC Tig welding function
- VRD
- Primary input Voltage: 415V, 3 Phase
- Rated power supply capacity: 14kVA
- Welding Current MIG: 50-350 AMPS
- Welding Current MMA: 10-350 AMPS
- Rated Duty Cycles @ 40 deg C MIG: 40% @ 350 AMPS 100% @ 221 AMPS
- Rated Duty Cycles @ 40 deg C MMA: 40% @ 350 AMPS 100% @ 221 AMPS/



Thermamax TSM 350 SF MIG Welder

This machine is well built and reliable for any manufacturing environment.

High quality transformer design with copper windings. Step adjustment divided into 30 settings for easy selection, with spot weld function.

Voltage control from 70 - 370 AMPS.

This machine is also capable of welding Flux Core.



Inverter Welders

- 160AAfrox Trans Arc MMA
- 200A Dura Arc
- 200A Uni Arc
- 400A Uni Arc
- 400A Thermamax TSA
- 400A Goliath MMA
- 400A Uni Power MultiArc

Identification and Validation

- All machines are marked with unique numbers
- All machines are validated prior to rental

TOOLS & EQUIPMENT

Electrical Tools & Equipment

- Earth Clamps
- Electrode Holders
- Welding Cables 300A x 20m
- Welding Cables 600A x 20m
- Extension Cables 220V x 20m
- Extension Cables 380V x 20m
- Flood Lights & Mobi Lights
- Electrode Holding Ovens
- Electrode Baking Ovens
- Hot Boxes
- Exstraction Fans
- Drills - Hand Held
- Drills - Heavy Duty SDS Hilti
- Drills - Magnetic Base
- Grinders 115mm
- Grinders 230mm
- Pencil Grinders
- Impact Wrenches 1/2", 3/4" & 1"
- Thread Cutting Machine
- Distribution Boards - Dual 380V + 220V
- Distribution Boards - 9 x 220V Plugs
- Trailing Cables - 25m & 50m

Other Tools & Equipment

- Tig Torch c/w Flow Meter & Hoses
- Cutting Torches c/w Regulators and Hoses
- Heating Torches
- Allen Keys
- Bolt Cutters
- Flogging Spanners
- Gwalas
- Hammers - 4, 8 & 16 Pounds
- Hydraulic Jacks
- Hydraulic Torque Machine
- Pipe Wrenches
- Shifting Spanners
- Sockets - 1/2", 3/4" & 1" Drive, 14mm - 80mm
- Spanners
- Torque Wrenches
- Compressors
- Consumables Storage Cage
- Gas Cylinder Storage Cages
- Gas Cylinder Lifting Cages
- Fire Extinguishers

PPE

- Dust Masks
- Gloves
- Leather Aprons & Spats



LIFTING EQUIPMENT

Chainblock

- Robust & dependable chain blocks that is economical & lightweight
- Each unit is tested to 125% of the rated capacity
- Supplied with individual load test certificates



CAPACITY (Tons)	LOAD CHAIN DIAMETER (mm)	QUANTITY AVAILABLE
0.75	6	7
1	6	4
1.5	8	15
2	8	11
3	8	89
5	10	20
10	12	4
15	12	4

Ratchet Lever Hoist

- These heavy duty units have been tried and tested to cope with South African conditions
- Each unit is tested to 125% of the rated capacity
- Supplied with individual load test certificates



CAPACITY (Tons)	LOAD CHAIN DIAMETER (mm)	QUANTITY AVAILABLE
0.75	6	7
1.5	8	13
3	10	29
3.2	10	6
6	10	7

Snatch Block



SWL (Tons)	SHEEVE DIAMETER (mm)	ROPE DIAMETER (mm)
3	200	13-16
5	250	16-20

Plate Grab

- Grabs are equipped with safety mechanism, ensuring the grab does not slip when lifting force is applied and when the load is being lowered
- Vertical Grab - Spring loaded tightening lock mechanism ensures a positive initial clamping force
- Horizontal Grab - Used in pairs

SWL (Tons)	JAW OPENING (mm)	EYE DIAMETER (mm)	NET WEIGHT (KG)	VERTICAL	HORIZONTAL	UNIVERSAL
1.5	0-25	25	3		X	
3	0-30	74	15			X
5	5-45	64	15	X		



LIFTING EQUIPMENT

Beam Crawl

- Rolacrawl plain or geared beam trolleys can be used to attach electric/manual hoists to beam structures, allowing free movement. These Beam trolleys offers quick and easy installation and adjustment. Suitable for a wide range of beam widths. Models range from 1 Ton-5 Ton.

CAPACITY (Tons)	WEIGHT (KG)	PLAIN OR GEARED	TO FIT BEAM WIDTH	
			MINIMUM (mm)	MAXIMUM (mm)
1	9	Plain	58	220
2	14.5	Plain	66	220
3	25	Geared	74	220
5	38.5	Geared	90	220



Beam Clamp

- Beam clamps are fully adjustable for use as a below the hook lifting device, offering a cost effective method for holding and positioning applications.



SWL (Tons)	ADJUSTABLE BEAM WIDTH (mm)
3	80-320
5	80-320

Chain Sling

- The supply of chain slings is a somewhat daunting exercise if one is not prepared. The standard for sling is the reach, this distance is commonly known as the "bearing to bearing" distance, and not the chain length. This is calculated by adding the length of the relevant components to be used and subtracting this figure from the total length to give the chain length required.

SWL (Tons)	LEGS PER CHAIN SLING			REACH (m)					
	1	2	4	2.0	3.0	4.0	5.0	6.0	10.0
3.15	X				X				
5.30	X					X			
6.62			X	X			X		
8		X					X		
11.20		X						X	
17			X					X	X



Tirfor - 3T With 30M Cable

- Suitable for many applications, TIRFOR machines are lever operated hoists using a separate wire rope. One-man operated, using a telescopic operating handle, they can work in any position and

over any height of lift. They can replace conventional winches and other hoists for many applications

- Tirfor can be used to lift and pull loads.



LIFTING EQUIPMENT

Wire Rope Sling



ROPE DIAMETER (mm)	STRAIGHT / VERTICAL LIFT (Tons)	Available lengths as per L (m)				
		1	1.5	2	4	7.5
10	1	X				
10	2.1			X		
16	3	X	X	X		
26	8				X	
32	8					X
32	9.5	X			X	X

Flat Webbing & Endless Round Slings

- Endless Round slings are made of tensile yarn in a continuous spun length
- Slings are colour coded to SWL for easy identification.

COLOUR CODING (t)	STRAIGHT VERTICAL LIFT (Tons)	CHOKED LIFT (t)	BASKET HITCH		AVAILABLE LENGTHS (m)									
			PARALLEL (t)	0° TO 90°	0° TO 270°	0.5	1.5	2	3	4	5	6	7	8
VIOLET	1	0.8	2	1.4	1	X								
GREEN	2	1.6	4	2.8	2	X	X	X	X			X		
YELLOW	3	2.4	6	4.2	3		X	X	X	X		X		
GREY	4	3.2	8	5.6	4			X	X					
RED	5	4	10	7	5			X						X
BROWN	6	4.8	12	8.4	6				X					X
BLUE	8	6.4	16	11.2	8				X					
ORANGE	10	8	20	14	10								X	

Dee & Bow Shackles



DEE Pin with screw

BOW Pin with screw

DEE & BOW SWL SHORT (Tons)	DEE & BOW BODY DIA (mm)	DEE & BOW PIN/ BOLT DIA (mm)	DEE & BOW INSIDE WIDTH AT PIN (mm)	BOW ONLY INSIDE WIDTH AT BOW (mm)	DEE ONLY INSIDE LENGTH (mm)	BOW ONLY INSIDE LENGTH (mm)	DEE ONLY APPROX WEIGHT (kg)	BOW ONLY APPROX WEIGHT (kg)	AVAILABILITY	
									DEE	BOW
4.75	20	22	30	51	61	71	1.02	1.06		X
6.50	22	25	36	58	76	84	1.43	1.53	X	X
8.50	25	28	44	67	83	95	2.16	2.42		X
12	32	35	52	81	101	119	4.11	4.31	X	X
13.5	35	38	58	91	118	134	5.28	6.02		X
17	38	42	61	96	125	144	7.24	8.04		X
25	44	51	74	126	150	180	12	14		
35	51	56	85	143	170	197	19	21		X

STORAGE & OFFICE CONTAINERS

6M Office Containers

- Containers are insulated
- Aircon inside
- Burgler Bars
- Furnished or unfurnished



10M Parkhome Office

- Parkhome is insulated
- Aircons inside
- Two separate offices
- Furnished or unfurnished



6M & 12M Storage Containers

- Not insulated
- With or without shelves



12M Ablution Container

- Two separate entrances
- Six individual toilet stalls
- Four urinals
- Four basins



KWIKSTAGE SCAFFOLDING

Description

Kwikstage scaffolding is the most widely used scaffolding in South Africa. With its benefit of quick erection and strength, this scaffolding provides favourable and cost effective access to construction activities.

Benefits of Kwikstage scaffolding:

- Simple to assemble, use and de-construct
- Practical to bundle, transport and store
- Easy to provide quick access

Inventory



HOOK ON BOARDS	
UNIT LENGTH (mm)	QTY AVAILABLE
2500	242
2000	1219
1500	1115
1300	12
1219	393
900	1324
600	290

STANDARD	
UNIT LENGTH (mm)	QTY AVAILABLE
4000	796
3500	54
2000	125
1500	114
1000	156
500	178



LEDGER	
UNIT LENGTH (mm)	QTY AVAILABLE
2000	1197
1500	1040
1300	68
900	1229
600	160
500	24

TOE BOARD	
UNIT LENGTH (mm)	QTY AVAILABLE
2500	172
2000	308
1500	272
1000	6
900	228



SCAFFOLD TUBES	
UNIT LENGTH (mm)	QTY AVAILABLE
3500	26
3000	38
2500	128
1000	118

LADDER BEAM	
UNIT LENGTH (mm)	QTY AVAILABLE
6000	29
4000	15
2000	5



DIAGONAL BRACE	
UNIT LENGTH (mm)	QTY AVAILABLE
2500 x 1500	29
2000 x 2000	106
2000 x 1500	19

CANTILEVER BRACKET	
UNIT LENGTH (mm)	QTY AVAILABLE
900	47
600	18
300	12

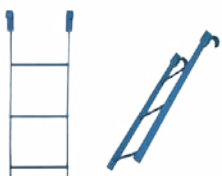


KWIKSTAGE SCAFFOLDING

Description

Kwikstage scaffolding is a on site fabricated tube structure that provides access to height in, predominantly, the construction industry, but may also be used for maintenance work and any other work at height. This system may also be used for propping of slabs and formwork.

The key components of Kwikstage are standards, ledgers, base jacks and hook-on boards. The adaptability of the system enables the standards to be erected close to together where necessary, to accommodate heavier loads on the scaffold.



HOOK ON LADDER	
UNIT LENGTH (mm)	QTY AVAILABLE
2000	125
1000	24

REINFORCED LEDGER	
UNIT LENGTH (mm)	QTY AVAILABLE
2000	116
1500	16



DH COUPLER	
UNIT LENGTH (mm)	QTY AVAILABLE
N/A	504

SWIVEL COUPLER SET	
UNIT LENGTH (mm)	QTY AVAILABLE
N/A	121



BASE JACK	
UNIT LENGTH (mm)	QTY AVAILABLE
600	114

SWIVEL JACK	
UNIT LENGTH (mm)	QTY AVAILABLE
N/A	50



BAND & PLATE SET	
UNIT LENGTH (mm)	QTY AVAILABLE
N/A	1014

TOE BOARD CLIP	
UNIT LENGTH (mm)	QTY AVAILABLE
N/A	1435



STAIRCASE	
UNIT LENGTH (mm)	QTY AVAILABLE
2500 x 2000 x 500	42

TRAP DOOR	
UNIT LENGTH (mm)	QTY AVAILABLE
3 Board wide	63



Additional Services available:

- Delivery and Installation
- De-construction
- Certification & Inspections

JOHN THOMPSON BUSINESS UNITS



Utility Boilers & Environmental

- Boiler maintenance
- Boiler retrofits
- Electrostatic precipitators
- Fabric filter plant
- Welding procedure development
- High pressure piping
- Nuclear piping
- Construction services
- Cooling towers
- Flue gas desulphurisation
- Engineering services
- Laser cutting
- Steel fabrication



Industrial Watertube Boilers

- Coal-, biomass-, oil- & gas-fired watertube boilers
- Waste-heat boilers
- Boiler components
- Construction services
- Engineering services
- Refurbishment & retrofitting
- After-sales service & spares



Package Boilers

- Coal-, biomass-, oil- & gas-fired firetube boilers
- Waste-heat boilers
- Chainrate stokers
- Energy management
- Engineering services
- Construction services
- Boiler development & training centre
- After-sales service & spares



Manufacturing

- Pressure vessels
- Steam generators
- Pressurised system
- Heavy fabrications
- Piping, plate & structural
- Meehanite foundry
- Quality assurance & control
- Inspection services
- Non-destructive testing
- Post weld heat treatment
- Pressure testing
- Qualification of welding procedures and welders



Air Quality Solutions

Air Pollution Control (APC)

- Dust control, Gas cleaning
- Turnkey systems, Bag filters
- Wet scrubbers, Cyclones, Grit collectors, ESPs
- Design engineering, After sales & spares, Maintenance,
- Refurbishment & repairs

Heating, Ventilation and Air Conditioning (HVAC)

- Design, Fabrication, Installation & Commissioning
- After-Sales Service & Maintenance

JOHN THOMPSON

A division of ACTOM (Pty) Ltd

Utility Boiler and Environmental (B&E)

Tel: +27 (0) 87 153 3519

31 B Lincoln Road

Benoni South

1501

South Africa

equipmenthire@johnthompson.co.za

www.johnthompson.co.za