



# WERNER



## IMPI COMBINATION



100%  
SA BUILT



ALL DETAILS AT A  
GLANCE



Cyclone

Rear Mounted Control Panel



Sludge Level Indicator



Control Levers



Rear Door Lock Cylinder



Lateral Manual Hose Reel

# TECHNICAL SPECIFICATIONS



## 3- Axle Truck (see Fig. 1 and 2)

|                       |                 |
|-----------------------|-----------------|
| Tank Volume (L)       | 12500 (Approx.) |
| Payload (Kg)          | 12500 (Approx.) |
| Dimensions LxBxH (mm) | 4565x2600x3733  |

## Tank Superstructure

- Tank sheet in 304 stainless steel
- Cylindrical vacuum resistant end plates
- Float level indicator
- Overflow valve with pressure safety valve.
- Rear door opening with one hydraulic double-acting cylinder with securities to avoid accidental closing
- Pneumatic throttle valve to avoid the refuse outlet when chassis is running.
- Rear door closing by means of hydraulic lock cylinders.
- Rear (manual) 6" discharge gate valve
- Tank tipping device with double acting hydraulic cylinder (approx. 40°)
- 30 m ½" lateral manual hose reel with couplings
- Automatic Pneumatic safety device to block tank when tipped.

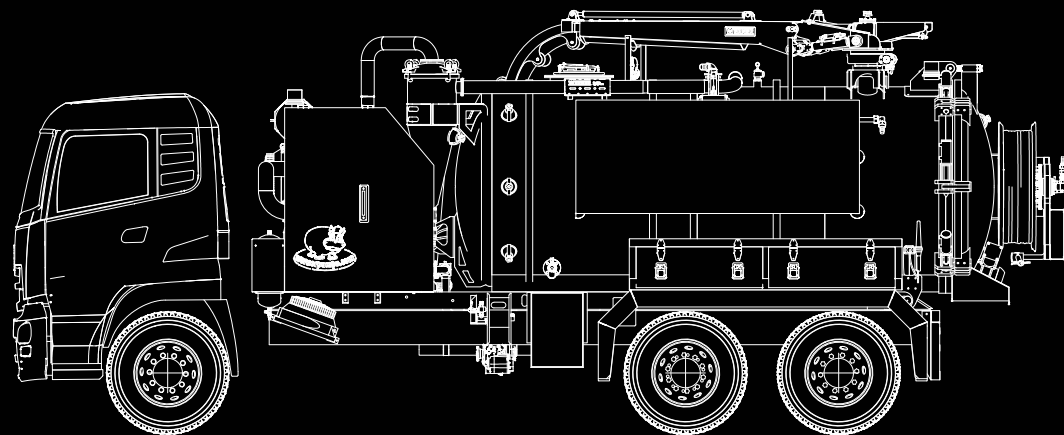


Fig. 1

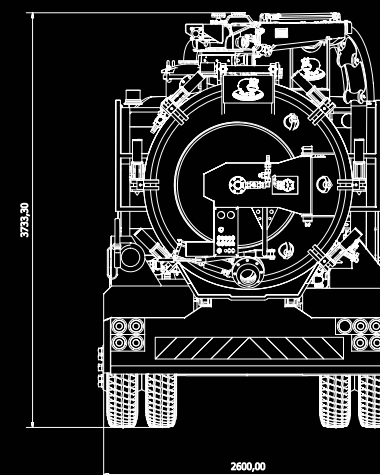


Fig. 2



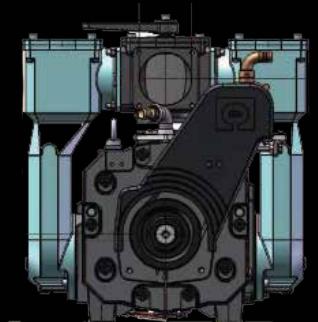
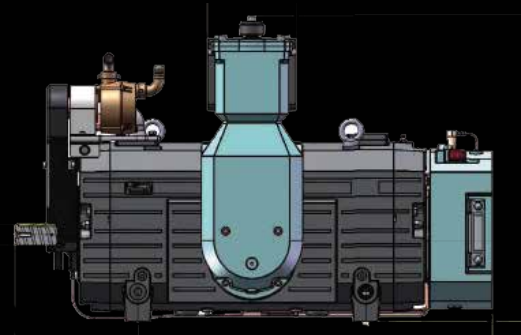
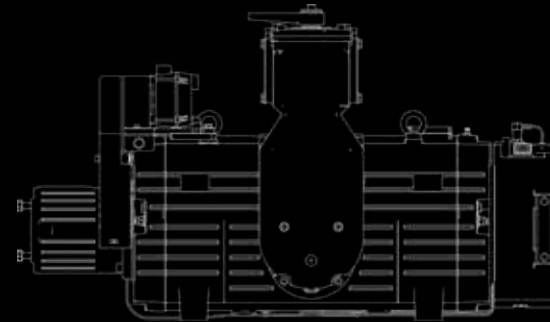
# VACUUM SYSTEM



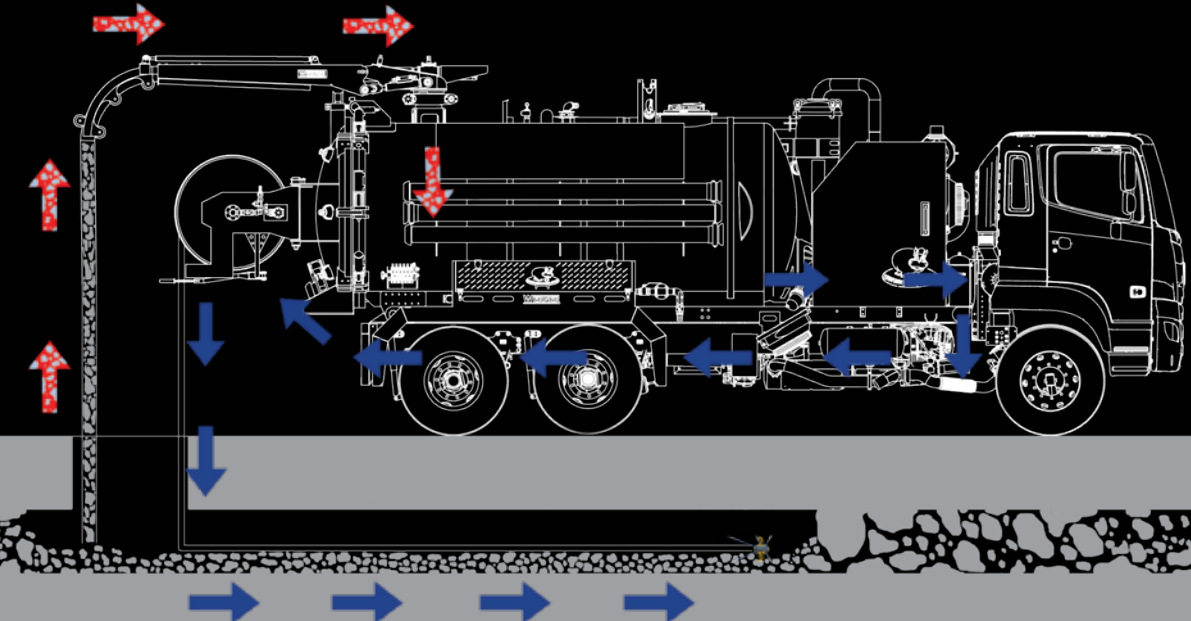
## Vacuum System

- WERNER vane vacuum pump model Storm PM3000 with water cooling, positioned between the tank and the cab.
- Maximum theoretical delivery: 1700 cu.m/h  
Maximum theoretical vacuum: 93%  
Hydraulically driven by pumps off chassis PTO
- High efficiency cooling thanks to continuous running of feed pump from 250 litre water tank which enables the pump to continuously work in high vacuum conditions
- Integrated four-way pneumatic system for vacuum/pressure inversion
- Non-return valve
- Silencers:
  - Silencers on cooling air with cooling system and on the delivery line of the vacuum pump
- Moisture trap:
  - Moisture trap with big volume in stainless steel with internal overflow valve, level gauge, designed to slow down the flow of air sucked from the tank and to hold the liquid and muddy impurities.
  - Pneumatic discharge gate valve
  - Electronic sensor for the presence of liquids in the moisture trap with opening on the breather valve
- Security filter:
  - Filter with washable cartridge in stainless steel to retain small solid impurities
  - Positioned between the moisture trap and the vacuum pump
  - Quick opening inspection door
  - Drainage valve

- Hydraulic suction boom:
  - Top mounted suction boom
  - Complete with centre-plate, suction turret and pneumatic controlled throttle valve
  - Hydraulic rotation
  - Hydraulic up/down movements of the arm (amplitude 3500 mm)
  - Hydraulic extension of the arm (stroke 1350 mm)
  - Working length over the side profile: 3300 mm
  - Complete with Ø 125 mm rubber suction hose
  - Removable push-button panel controls for throttle valve opening, vacuum vacuum pump inversion, rotation, up/down and in/out movements
  - Terminal suction pipe in hot galvanised steel



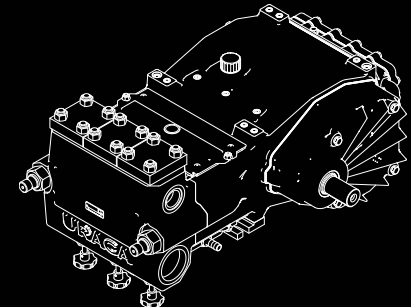
# HIGH-PRESSURE SYSTEM



## High-pressure System

- WERNER High Pressure Plunger pump (triplex plungers)
- Capacity of approx. 295 L/min
- Maximum pressure of 135 bar (dependant on power of the chassis)
- Combined functioning of the high-pressure pump and the vacuum pump
- Hydraulic driven self-priming overfeeding pump
- Pressure regulating valve:
  - Pneumatically controlled
  - Water by-pass in the tank
  - Safety against lack of water
- Positioned between the cab and tank on a steel section support
- Hydraulic pump with incorporated clutch

- Visual Water level indicator:
  - Water level indicator for clean water tank with pump stop and visual alarm by reaching the minimum level
  - The alarm can be disconnected to complete the job with the residual quantity available (not recommended)
- Rear hydraulic hose reel, manually swiveling:
  - Mounted overhanging the rear door of the tank
  - Slewing by manual means
  - Manually opening at 180° maximum rotation angle
  - Hydraulic rotation by motor, pinion and chain properly protected
  - Flow regulator to optimise the winding/unwinding speed
  - Revolving manifold and exclusion valve
  - Special locking device to avoid the accidental movement during transport
  - Complete with 120 m of 1" high-pressure hose with couplings
- Lateral manual hose reel:
  - Mounted on the left rear side of the vehicle
  - Manually rotating with hand wheel with manual locking device
  - Complete with 30 m of ½" high-pressure reinforced hose with couplings



# EQUIPMENT AND ACCESSORIES



## Hydraulic System

- Hydraulic oil reservoir, with filter, level gauge and interception gate valves on the feeding lines with sufficient cooling

## Control System

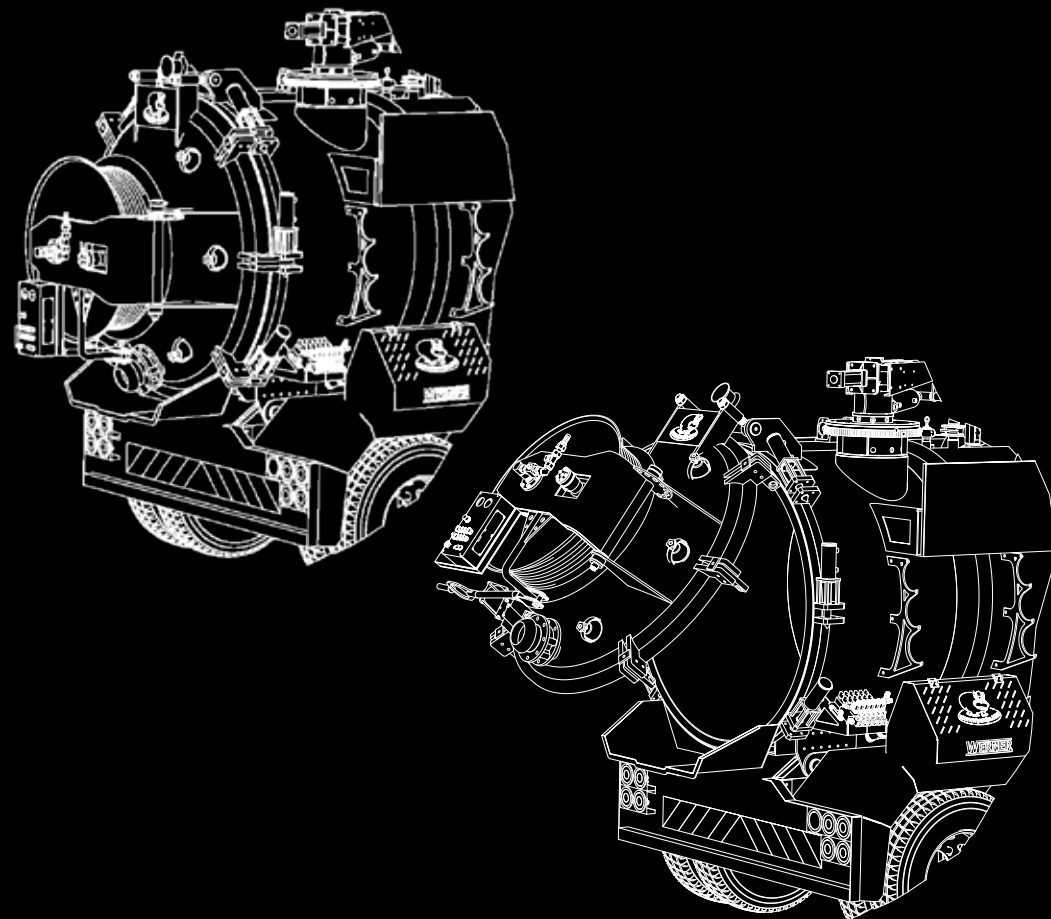
- Rear mounted control panel powder coated made from mild steel with IP65 protection, with E-stop button, Vacuum pump engagement, Vacuum gauge, HP pump engagement, Water pressure gauge, water pressure regulator.
- Wire-distance Control for: Tank tipping, Rear door opening and Hydraulic lock cylinders opening and closing.
- Chassis Cab: PTO on/off switch
- Control panel includes the following functions:
  - Chassis engine accelerator
  - Control for swivelling of the hose reel
  - Water pressure regulator
  - Opening and closing of the brake valve
  - Flow regulator for winding/unwinding speed
  - Rev counter for RPM

## Power Transmission

- With total horizontal/vertical type mounted between the gearbox and differential gear
- Transmission to the vacuum pump and H.P pump by means of hydraulic engines and pumps
- Combined functioning of the pumps

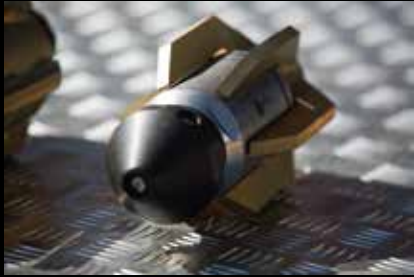
## Accessories (If required)

- High pressure spray gun with 1/2" hose
- Nozzles delivered with equipment: Pointed, bullet and grenade bomb nozzles
- Rear working light
- Mild steel clothes box
- Working vice

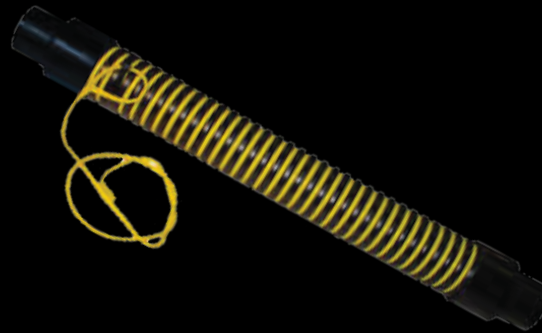




# NOZZLES AND HOSES



## NOZZLES & HOSES





# WERNER



## Get in touch

For all your high-pressure jetting equipment needs,  
Contact Werner South Africa Pumps to experience  
the highest standards of supply and service.  
For more information on how we can  
meet your needs,  
please get in touch:





### WERNER

WERNER SOUTH AFRICA PUMPS & EQUIPMENT (PTY) LTD.

**Sebastian Werner**  
4-6 Edison Road, New Era,  
Springs  
Republic of South Africa  
P.O. Box 11052  
Selcourt, Springs, 1567

Cell: +27 (0) 82 455 5522  
Tel: +27 (0) 11 362 6280  
Fax: +27 (0) 11 362 6797  
E-mail: [sebastian@wernerpumps.com](mailto:sebastian@wernerpumps.com)  
Website: [www.wernerpumps.com](http://www.wernerpumps.com)

Managing Director

**B-BBEE**  
**LEVEL**  
**CONTRIBUTOR** **2**